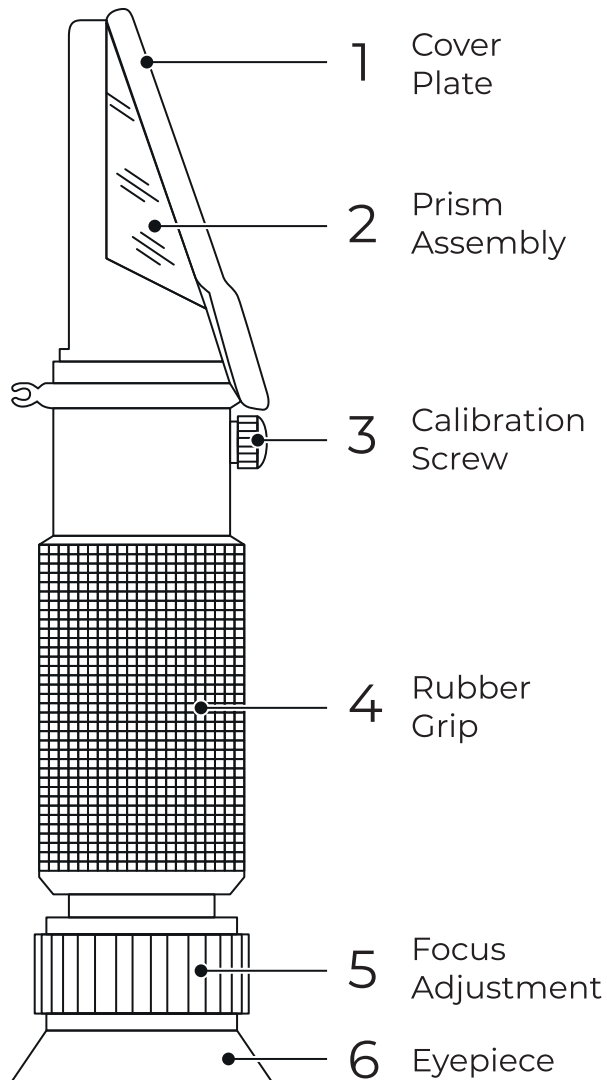


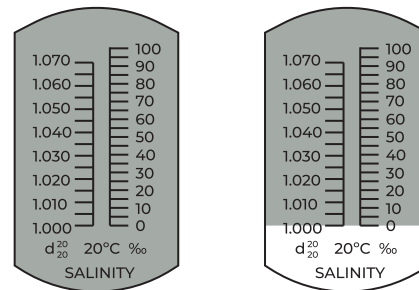
1. STRUCTURE DIAGRAM



2. OPERATION INSTRUCTIONS

1. Align the prism assembly (2) with light and adjust the focus (5) until you can see the scale clearly.

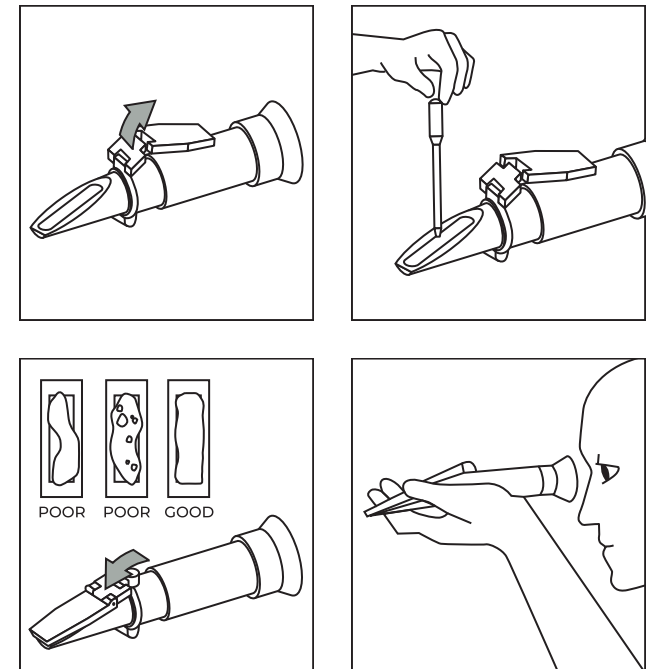
2. Calibration: Accurate measurement depends on careful calibration. To calibrate the refractometer accurately, firstly you should make sure the ambient temperature is about 68 °F. It is recommended to do the calibration in an air conditioned room in which the temperature is set at 68°F. You can use distilled water to calibrate. Open the cover plate (1), place 2-3 drops of distilled water on the prism (2), then close the cover plate and make sure the water spreads across the prism without air bubbles or dry spots. Wait for about 30 seconds to let the reading to stabilize. Look into the eyepiece (6) and turn the calibration screw (3) with the screw driver until the reading is "0".



Please note: The pictures above are just for reference, the actual scale may be different.

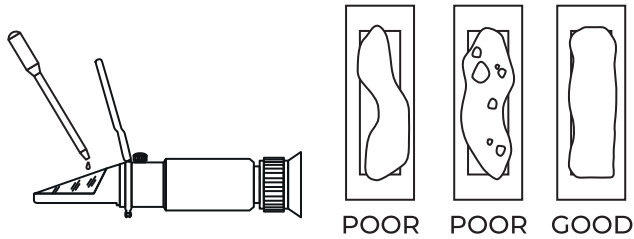
3. Clean the prism with soft cloth, and then place 2-3 drops of the liquid sample to be tested on the prism. Then close the cover plate and make sure the sample spreads across the prism without air bubbles or dry spots. Wait for about 30 seconds to let the reading stabilize. Align the prism assembly with the light source, look into the eyepiece and you can get the reading.

4. Clean the refractometer with soft cloth and put it back into the box. Keep the refractometer dry and clean, that can make the instrument accurate and durable.



3. CONSUMER NOTICE

1. When you put the calibration solutions or your sample to be tested on the daylight plate, make sure the liquid spreads across the entire surface of the prism without air bubbles or dry spots.



2. Do not put the instrument into water to wash, this may lead the refractometer to be foggy or rusty inside.



3. Clean the instrument with a soft cloth after each use, keep the refractometer dry and clean, that can make the instrument accurate and durable.

4. Please, do not loosen any connection part, do not let the instrument drop or collide and do not shake it intensely.

5. Please, keep it in dry place free of corrosive gas.

PORTABLE REFRACTOMETER

